

1 A patient with known malignant pelvic rim cancer has lower extremity pain and edema due to nerve and lymph node involvement. Which of the following modalities is the **BEST** method to use for pain management?

- A. Moist heat to the affected area
- B. Pulsed ultrasound 3MHz to the affected area
- C. Cryotherapy to the affected area
- D. Continuous ultrasound 1MHz to the affected area

Identify in a word, or phrase the basic concept of the question?

Re-write the question in its simplest terms, using your own words.

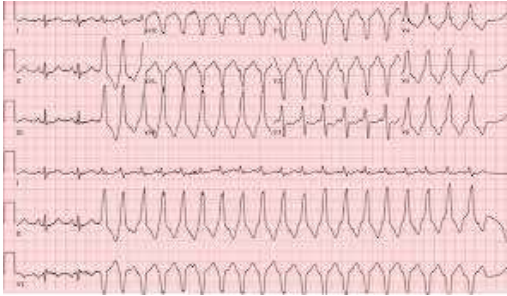
2 For a patient with a complete T10 spinal cord injury to achieve stability while standing with crutches, the patient should maintain which of the following positions?

- A. Hips posterior to the ankles
- B. Shoulders posterior to the hips
- C. Ankles plantar flexed
- D. Knees hyperextended

Identify in a word, or phrase the basic concept of the question?

Re-write the question in its simplest terms, using your own words.

3



A physical therapist assistant is performing passive range of motion of all extremities with a patient in the intensive care unit who is in a coma. The assistant notes the electrocardiogram in the photograph. The physical therapist assistant's **INITIAL** response should be to:

- A. continue with present treatment.
- B. continue passive range of motion of lower extremities only.
- C. stop the treatment and monitor electrocardiogram for 5 minutes.
- D. **activate the emergency system.**

Identify in a word, or phrase the basic concept of the question?

Re-write the question in its simplest terms, using your own words.

4 A physical therapist assistant is preparing to give instructions in the use of a new standing device to the family of a 3-year-old child who has myelomeningocele. Which of the following actions should the assistant perform **FIRST**?

- A. Ask the family what problems they would have with using a standing device.
- B. Give the family product literature and a video about the standing device.
- C. **Ask the family what method would be best for them to learn to use the standing device**
- D. Show the family how to place the child into the standing device.

Identify in a word, or phrase the basic concept of the question?

Re-write the question in its simplest terms, using your own words.

5 A patient who sustained an ulnar collateral ligament sprain of the thumb (1st digit) 1 week ago is referred for physical therapy. Which of the following actions is **MOST** appropriate when continuous ultrasound is being administered?

- A. Immerse the wrist and the hand in water.
- B. Apply 10% hydrocortisone to the skin.
- C. Apply mineral oil between the skin and the sound head.
- D. Utilize a stationary technique in direct contact with the skin

Identify in a word, or phrase the basic concept of the question?

Re-write the question in its simplest terms, using your own words.

6 A physical therapist assistant is teaching a patient wheelchair transfer. Which of the following techniques is **MOST** appropriate for the physical therapist assistant to employ to facilitate the patient's ability to generalize the learning?

- A. Provide verbal feedback immediately after each transfer is completed.
- B. Practice transfers back and forth between the bed and wheelchair repeatedly.
- C. The patient to perform transfers at a consistent rate with the wheelchair at a set angle.
- D. Vary the speed and surfaces for transfers

Identify in a word, or phrase the basic concept of the question?

Re-write the question in its simplest terms, using your own words.

7 A physical therapist assistant made two consecutive measurements of right shoulder flexion range of motion with a goniometer. The first measurement was 0°-150°, and the second was 0° -130°. No treatment occurred between measurements, and the remainder of the clinical examination findings were the same at both measurements. The assistant should conclude that the difference in the range of motion is due to poor:

- A. **intrarater reliability.**
- B. interrater reliability.
- C. content validity of goniometric measurements.
- D. criterion-related validity of goniometric measurements.

Identify in a word, or phrase the basic concept of the question?

Re-write the question in its simplest terms, using your own words.

8 During warm-up on a stationary bike, a patient reports feelings of fatigue. Following the activity, the physical therapist assistant observes the patient sitting in a chair with elbows resting on the knees. The assistant should assess the patient for which of the following?

- A. Trunk muscle weakness
- B. Poor sitting posture
- C. Lower extremity weakness
- D. **Use of accessory muscles for breathing**

Identify in a word, or phrase the basic concept of the question?

Re-write the question in its simplest terms, using your own words.

- 9 An inpatient is referred to physical therapy after undergoing coronary artery bypass surgery 5 days ago. The patient's medical history includes hypertension, hypercholesterolemia, and type 2 diabetes. Which of the following sets of factors would **MOST** impact the patient's plan of care?
- A. History of smoking, electrocardiographic changes, and parental/family history
 - B. Premorbid physical activity level, current physical condition, and motivation to exercise
 - C. Lower extremity muscle strength, waist-to-chest ratio measurement, and a treadmill test
 - D. Exercise history, daily caloric intake and dietary habits, and job responsibilities

Identify in a word, or phrase the basic concept of the question?

Re-write the question in its simplest terms, using your own words.

- 10 A patient with a recent total knee arthroplasty and a new diagnosis of hiatal hernia is concerned about the exercise program. Which of the following actions by the physical therapist assistant would be **MOST** appropriate?
- A. Supine exercises are best for patients with a hiatal hernia.
 - B. Exercise is contraindicated for patients with a hiatal hernia.
 - C. There are no restrictions on exercise for patients with a hiatal hernia.
 - D. The Valsalva maneuver should be avoided during exercise.

Identify in a word, or phrase the basic concept of the question?

Re-write the question in its simplest terms, using your own words.